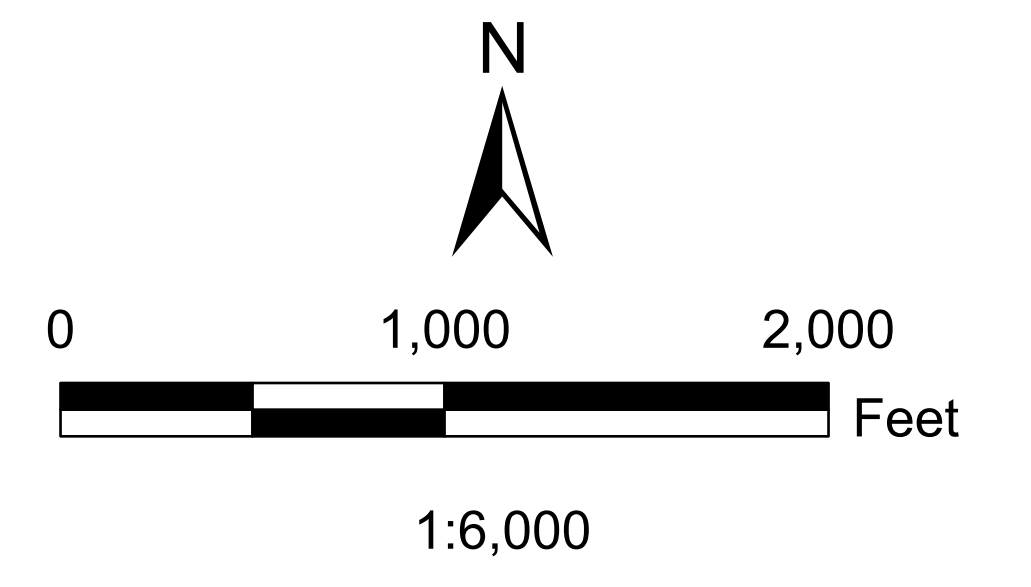


Eastern Section
Backflow Prevention
Flood Prone Properties
Muhlenberg Township Authority
Berks County, PA

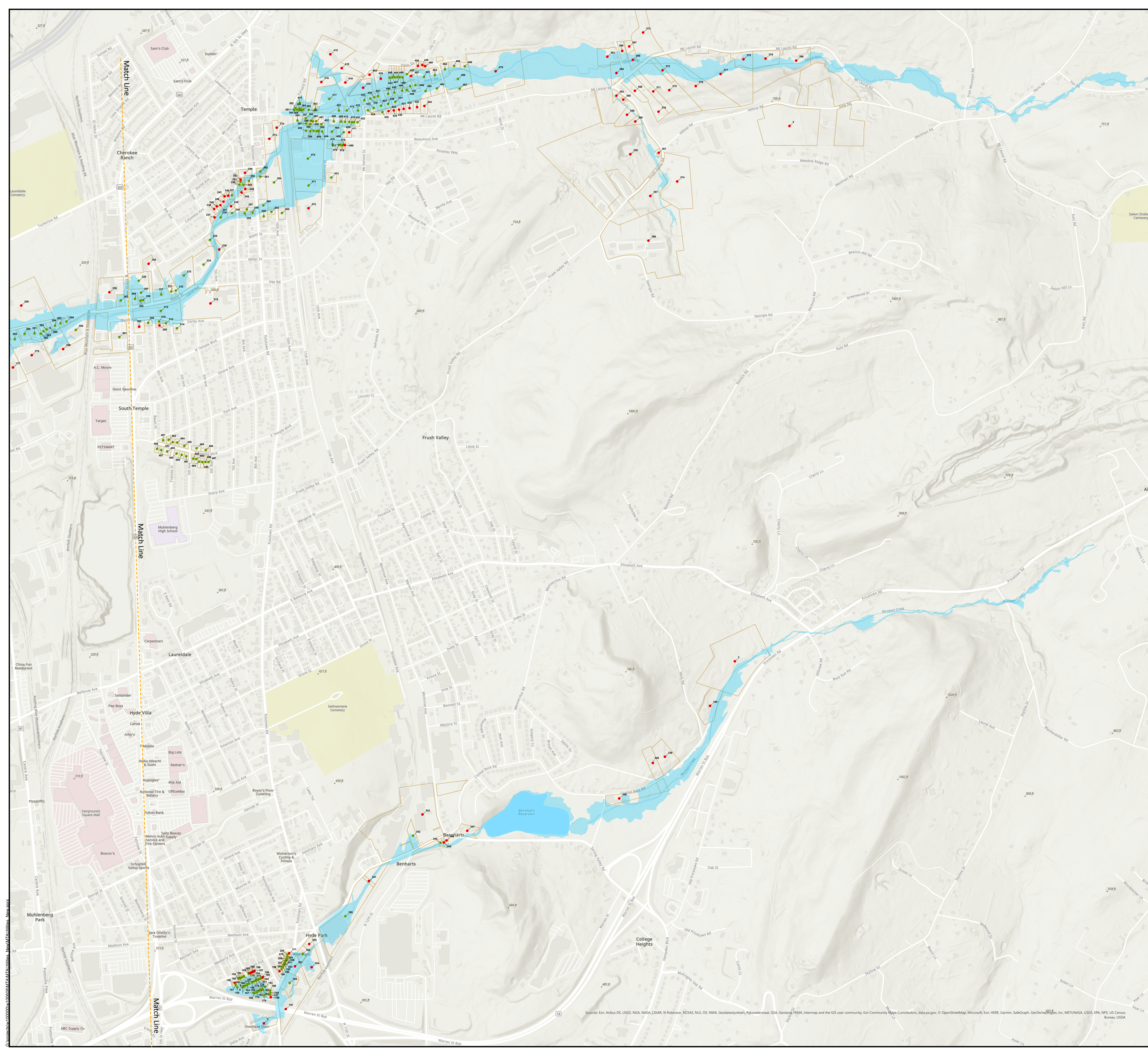
- Parcel Included in the Program**
- Approved Property
 - Declined/Unapproved Property
 - Flood Zone
 - Impacted Parcels



Data Source:
 Parcels, Berks County, 2022
 Selected Parcels, SSM, 2023
 Flooding Points, SSM, 2023

SSM
 SPOTTS | STEVENS | MCCOY
 Engineering and Environmental Services
 Reading | Lehigh Valley | Lancaster | West Chester
 P: 610.621.2000 F: 610.621.2001
 ssmgroup.com

12/05/23



Sources: Esri, Airbus DS, USGS, NGA, NASA, CGIAR, N Robinson, NCEAS, NLS, OS, NMA, Geodatasysteiri, Rijkswaterstaat, GSA, Geoland, FEMA, Intermap and the GIS user community, Esri Community Maps Contributors, data.psg.gov, © OpenStreetMap, Microsoft, Esri, HERE, Garmin, SafeGraph, GeoTech, Swire, Inc, METI/NASA, USGS, EPA, NPS, US Census Bureau, USDA